

A painting of a night landscape. A large, bright full moon is the central focus in a deep blue, twilight sky. The foreground is dominated by the dark, gnarled trunks and branches of trees, some with sparse green leaves. In the lower center, a sandy beach meets a calm body of water, with a small boat visible in the distance. The overall mood is serene and quiet.

Kathleen Goodwin

Point Reyes  
Portfolio



Kathleen Goodwin

Point Reyes  
Portfolio

Kathleen Goodwin

Point Reyes  
Portfolio

**Blair and Goodwin**

371 Drakes View Drive  
Inverness, CA 94937  
628 234 4456

kathleen@kathleengoodwin.art  
<http://kathleengoodwin.art>

[Website](#)

[Print Information](#)

[Contact](#)

[Stories](#)

## Biography

Born in Durban, South Africa in 1947, Kathleen Goodwin has a background in both art and science. Goodwin worked as a journalist for *The Daily News* in Durban, writing about injustice and apartheid. In 1974 she moved to Berkeley, California at a time of social activism and innovation. Her own life was changed when she lost an eye to a tumor in 1975.

Goodwin turned to creating art full time. She and her partner, Richard Blair, moved to Inverness in 1988 and built their current home after their cabin burned in the Mount Vision wildfire in 1995. Among their many projects is Environmental Eye. It donates photographs from their extensive library to the environmental and conservation community as an effective means to communicate the beauty and fragility of the earth.

From her home and studio on Inverness Ridge looking out to the Pacific Ocean, Goodwin uses her skills as a painter, photographer and writer to capture and share the sensual natural beauty of coastal Marin in her art. Her primary interest is working with color. She expresses this in her landscape painting, smaller canvases made on location and bigger ones painted in the studio which often take their inspiration from the smaller work. She favors dramatic lighting, painting peak moments.

She has published 11 books with Blair. Goodwin did most of the writing for the couple's first coffee table book in 1998, *Point Reyes Visions*, which became a Bay Area best seller. In more recent books, Kathleen's paintings and photographs are featured along with Blair's. They both are authors of their books on California, San Francisco, Marin and Point Reyes.

Goodwin exhibits both her fine art and photographs. She has had exhibitions at the Bolinas Museum, Toby's Gallery, the Claudia Chapline Gallery, the Barry Singer Gallery and the Mumms' Gallery. She has also been in many group shows. She was the Spotlight artist at Bolinas Museum in June 2021 and the featured artist on MarinTV in July and August. The video which aired on MarinTV is on her website, [kathleengoodwin.art](http://kathleengoodwin.art).

## Acquiring Art

All of these images are available as prints, which I make in the studio on archival rag paper. I am very particular about the color, sharpness, and overall appearance of these prints. You can click on the ***print information*** link on the lower right hand side for size and price information.

Some of these paintings are unsold. Please inquire if you are interested in availability and pricing using the ***contact link*** on the facing pages

## Artist Statement

I was born in South Africa and lived there until I was a young adult. I began painting in 1975 after I lost my sight in my right eye and found that painting made the world three-dimensional again. Art really helped me adjust to my new reality.

Getting to know the Point Reyes National Seashore was for me like coming home. After I moved to the Bay Area in 1974, I missed South Africa's wide open spaces. Then I discovered the Point Reyes National Seashore. It filled a need to rest my eyes on expansive beauty. There were trails where I could walk for miles with frequent opportunities to observe animals and birds living in their natural habitat. Painting and photographing in West Marin is a pleasure and privilege.

My landscape paintings mainly begin on location and are finished in my Inverness studio. I also use photographs that I have taken for reference particularly if I am trying to capture a fleeting moment with dramatic light and shadows.

I welcome collectors to visit my studio. Please use the contact link on these pages to inquire.



*Painting at Shell Beach*





*Ranch near Drakes Beach* 2018 48 x 24 inches Oil on Canvas





*Mount Tamalpais Diptych c. 2010 48 x 24 inches each panel 20 x 16 inches Oil on Canvas*





*Mount Tamalpais with Trees 2* c. 2017 24 x 18 inches Oil on canvas

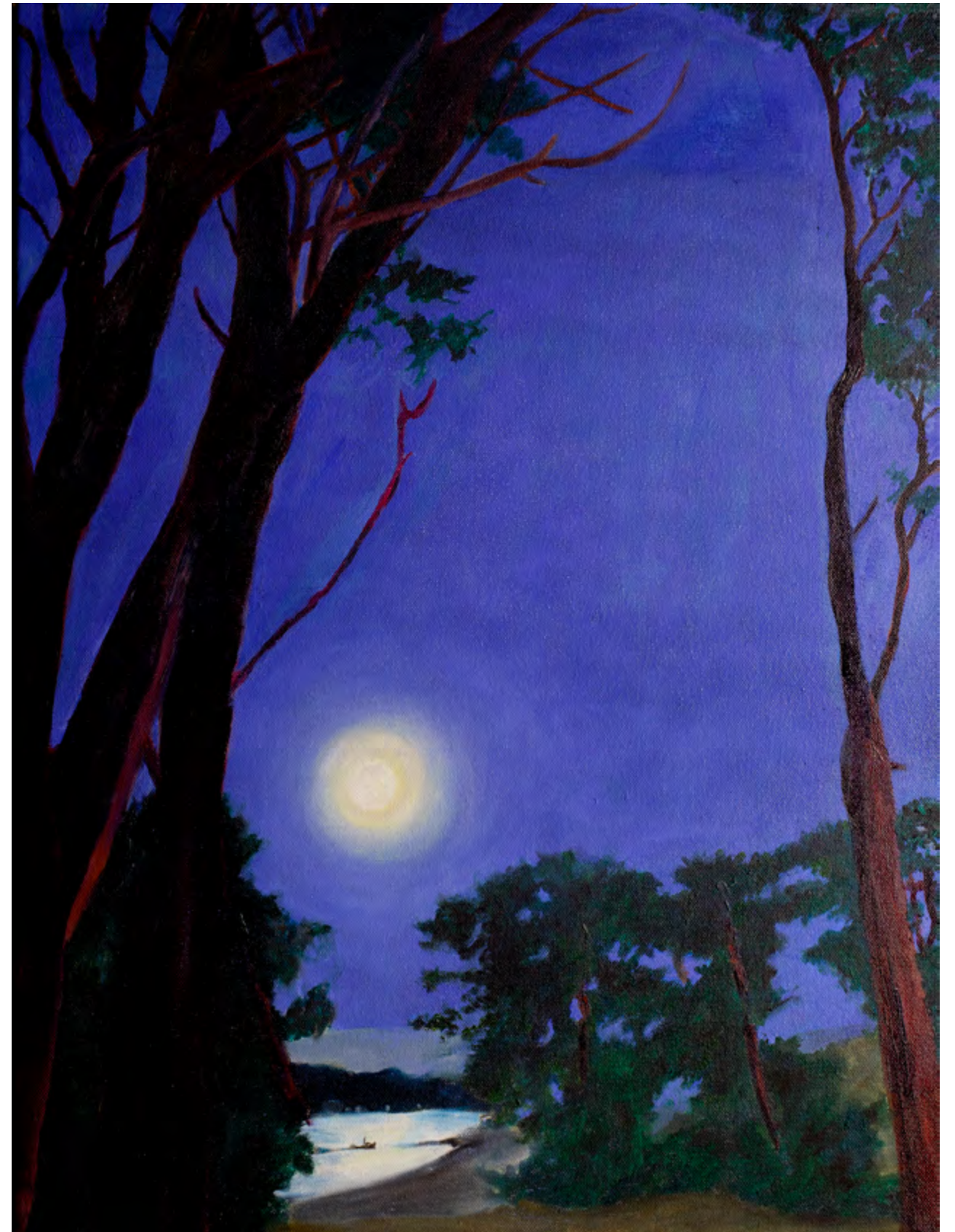


*Point Reyes Headlands from Chimney Rock* 2017 20 x 10 inches Oil on canvas





*Hills from Spirit Rock, San Geronomo Valley c. 2018 11 14 inches Oil on canvas board*



*Moon and Tomales Bay 2023 18 x 24 inches Oil on Canvas*





*Drakes Estero and the Farallones* 2005 48 x 24 inches Oil on Canvas





*Slopes of Mt. Tamalpais with Bolinas, Summer 2008 24 x12 inches Oil on Canvas*





*Wave and Chimney Rock* 1992 40 x 30 inches Oil on Canvas





*Muir Beach Inlet* c. 2012 20 x 16inches Oil on Canvas





*Grasses on Hill near Bear Valley Trail, Point Reyes* 2018 12 x12 inches Oil on Canvas



*View of Limantour Spit and Drakes Bay* 2016 32 x24 inches Oil on Canvas





*Hog Island and Tomales Bay* 2021 48 x 24 inches Oil on Canvas

[Website](#)

[Print Information](#)

[Contact](#)

[Stories](#)





*Path to Pebble Beach 2020* 28 x 20 inches Watercolor





*McClures Rock Looking North and South Triptych* 1990 - each panel 42 x 24 inches Watercolor on Arches paper





*Path through the Redwoods, Samuel Taylor State Park* 40 x 30 inches Oil on Canvas

[Website](#)

[Print Information](#)

[Contact](#)

[Stories](#)





*Storm Clouds over Point Reyes Headlands 2020* 48 x 36 inches Oil on Canvas

[Website](#)

[Print Information](#)

[Contact](#)

[Stories](#)





*Point Reyes Headlands* 1991 24 x 12 inches Acrylic on Canvas

[Website](#)

[Print Information](#)

[Contact](#)

[Stories](#)





*Estero de Limantour* 2021 48 x 24 inches Oil on Canvas

[Website](#)

[Print Information](#)

[Contact](#)

[Stories](#)





*Nicasio Reservoir Looking North* 2018 30 x 10 inches Oil on Canvas





*Tomales Bay from Inverness Ridge* 2016 32 x24 inches Oil on Canvas

[Website](#)

[Print Information](#)

[Contact](#)

[Stories](#)





*Purple Hills Triptych* 2019 each panel 30 x 40 inches Oil on Canvas

[Website](#)

[Print Information](#)

[Contact](#)

[Stories](#)





*Full Moon at Limantour Beach* 2018 36 x 24 inches Oil on Canvas





*Elephant Mountain from the Bolinas Ridge Trail* 2020 30 x 10 inches Oil on Canvas





*Crescent Moon at McClures Beach* 2013 16 x 12 inches Oil on Canvas





*Three cows walking and Drakes Estero 2016 20 x 10 inches Oil on Canvas*





*Yellow Fields and Storm Clouds* 2018 36 x 24 inches Oil on Canvas

[Website](#)

[Print Information](#)

[Contact](#)

[Stories](#)





*McClures Rock from the Tomales Point Trail* c. 2020 48 x 24 inches Oil on Canvas

[Website](#)

[Print Information](#)

[Contact](#)

[Stories](#)





*Giacomini Wetlands and Inverness Ridge* 2018 20 x 10 inches Oil on Canvas

[Website](#)

[Print Information](#)

[Contact](#)

[Stories](#)





*Kehoe Beach Reflections* 2016 48 x 24 inches Oil on Canvas

[Website](#)

[Print Information](#)

[Contact](#)

[Stories](#)





*White House Pool* 2016 30 x 24 inches Oil on Canvas





*Crescent Moon, McClures Beach 2* 2023 30 x 24 inches Oil on Canvas

[Website](#)

[Print Information](#)

[Contact](#)

[Stories](#)





*Grossi Pond and Bishop Pine* 2017 40 x 30 inches Oil on Canvas





*Stinson Beach* 2016 12 x 16 inches Oil on Canvas



*Waves on Tomales Bay Shore, Shell Beach* 2014 24 x 36 inches Oil on Canvas

[Website](#)

[Print Information](#)

[Contact](#)

[Stories](#)





*Drakes Beach and Orange Fields* 2016 40 x 30 inches Oil on Canvas

[Website](#)

[Print Information](#)

[Contact](#)

[Stories](#)





*Elephant Mountain and Shell Beach* 2014 40 x 30 inches Oil on Canvas

[Website](#)

[Print Information](#)

[Contact](#)

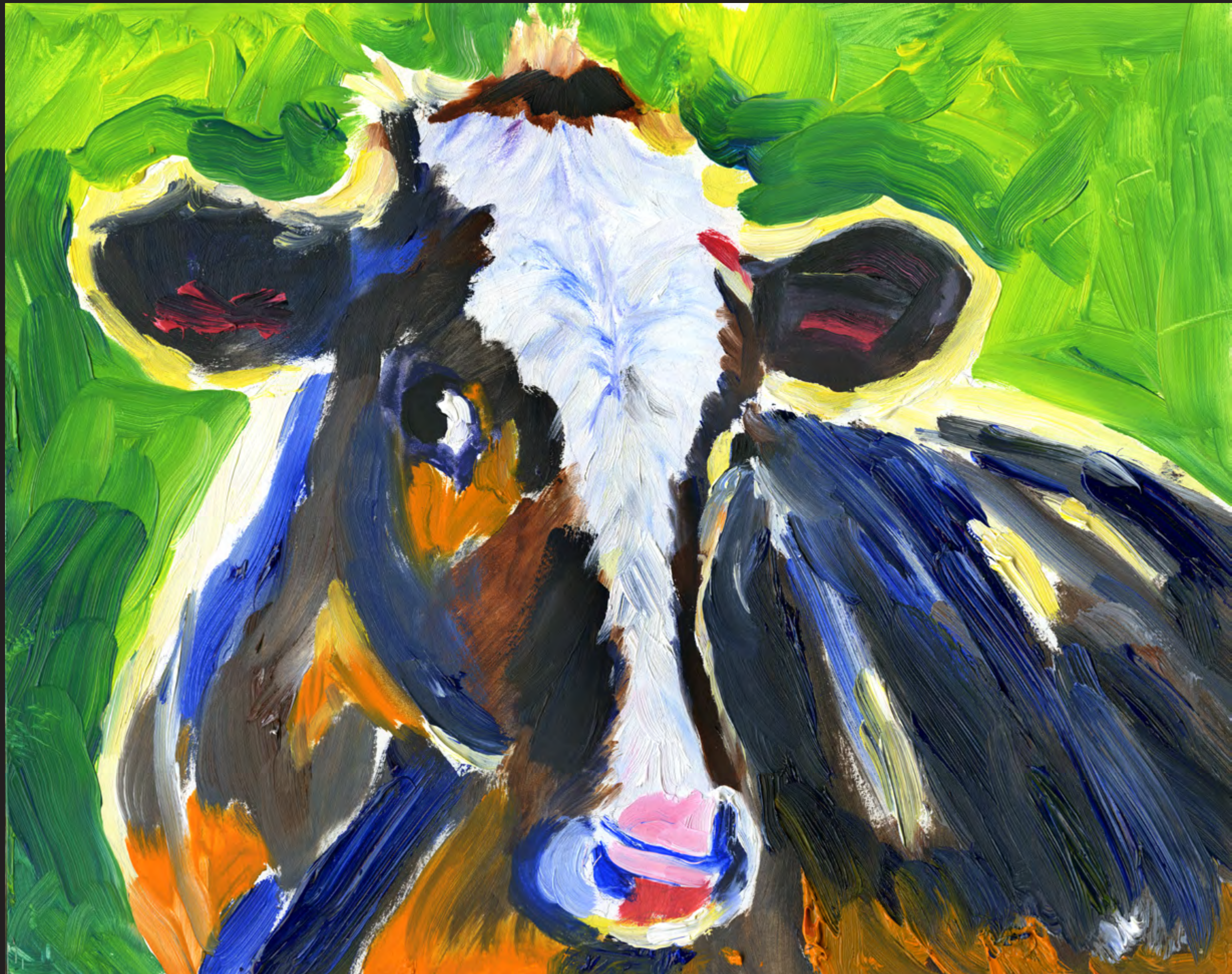
[Stories](#)





*Drakes Beach from the Hills above Limantour Beach* 2012 24 x 12 inches Oil on Canvas





*Cow Looking 1* 2016 14 x 11 inches Oil on Canvas





*View from Mount Tamalpais* 2016 60 x 40 inches Oil on Canvas

[Website](#)

[Print Information](#)

[Contact](#)

[Stories](#)





*Grossi Farm and Point Reyes Headlands* 2016 Each panel 20 x 24 inches Oil on Canvas

[Website](#)

[Print Information](#)

[Contact](#)

[Stories](#)





*Path to Pebble Beach* 2020 40 x 30 inches Oil on Canvas

[Website](#)

[Print Information](#)

[Contact](#)

[Stories](#)





*Drakes Beach and Cliffs* 2014 36 x 18 inches Oil on Canvas

[Website](#)

[Print Information](#)

[Contact](#)

[Stories](#)





*Elephant Mountain, Blue, and Early Morning Fog* 2023 36 x 18 inches Oil on Canvas

[Website](#)

[Print Information](#)

[Contact](#)

[Stories](#)





*Pilot Knob and Mt. St. Helena from Mt. Tamalpais with Fog* 2014 40 x 30 inches Oil on Canvas

[Website](#)

[Print Information](#)

[Contact](#)

[Stories](#)





*The Farallones* 1991 34 x12 inches Watercolor



*Limantour Beach* 12 x 6 inches Oil on Museum Board





*Bolinas and the Farallones from Mount Tamalpais* 2012 14 x 11 inches Oil on Canvas Board



*Spaletta Ranch and Point Reyes Headlands at Sunset* 2007 36 x 24 inches Oil on Canvas





*Drakes Beach Looking South* 2007 36 x 24 inches Oil on canvas



*The Farallones and Storm Clouds* 2003 14 x 11 inches Pastel on archival paper